

HIGH-TECH GAS ANALYZER

MULTISTATION FOR FITNESS AND HEALTH DIAGNOSTICS

SMART DAILY MONITORING OF BODY STATUS:

- Breath diagnostics
- Body composition diagnostics



- Physiological diagnostics
- Metabolic, nutrition diagnostics

Human exhalation contains more than 750 volatile compounds

HEALTHMONITOR - High-tech gas analyzing device, conducts a quick test on human body status by measuring the concentration of gases in exhaled air.



**CERTIFIED IN
EUROPEAN UNION**

Breath diagnostics

By measuring the quantity, concentration, and ratio of gases released during breathing we can make conclusions about metabolic changes or body malfunction.

“ SINCE GAS ANALYSIS IS COMPLETELY NON-INVASIVE, IT IS THE BEST SOLUTION FOR GENERAL SCREENING

Metabolic changes diagnostics

Medical diagnostics

Inflammation
Lung diseases
Stomach diseases
Diabetes, etc.

Sport diagnostics

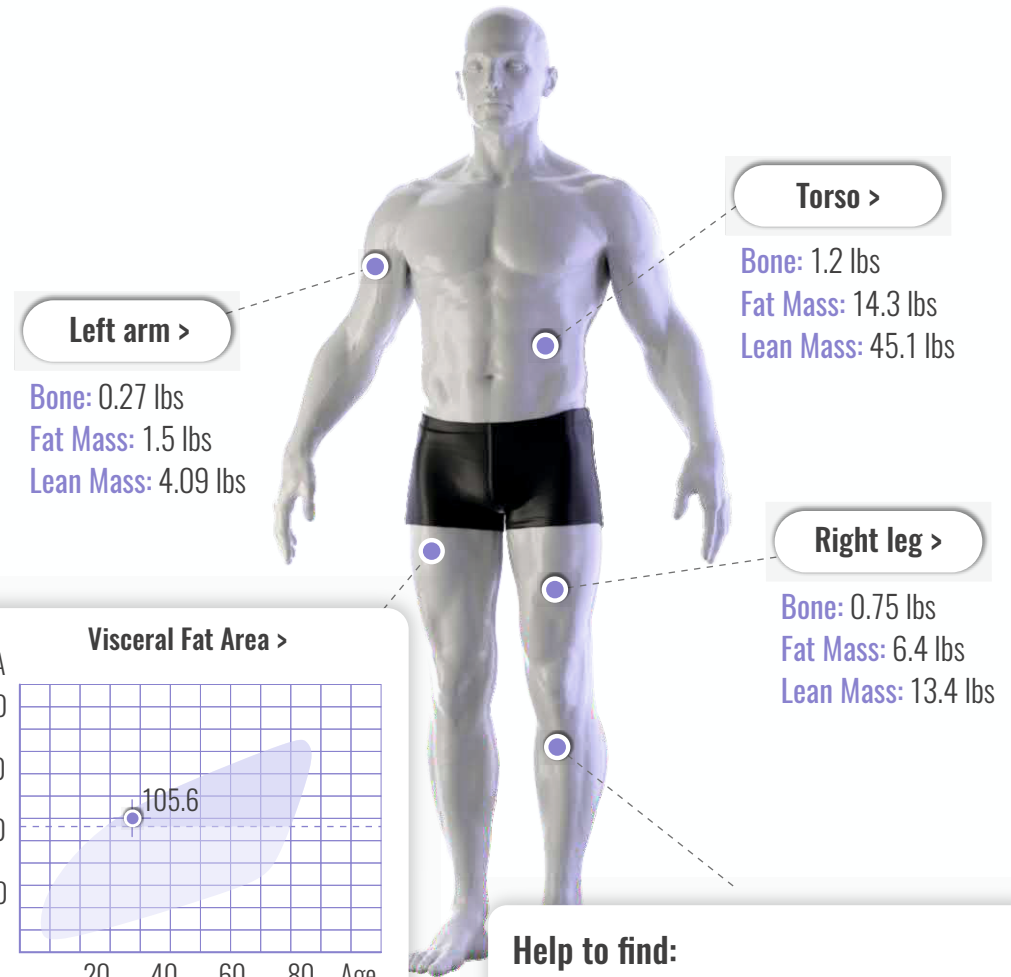
Fitness status monitoring

Daily nutrition diagnostics



Body composition diagnostics

Body composition analysis helps to monitor the state of lipid, protein and water metabolism of the body



Help to find:

- risk of developing metabolic syndrome
- diagnosis and treatment of dysregulation of the cardiovascular system
- assessment of physical performance and its adaptation to the environment, etc.

HEALTH-CHECK STATION FOR EVERY DAY

(non medical preliminary diagnostics)



HUMAN BREATH ANALYSIS

- Markers of lung inflammation
- Marker of kidney disease
- Risk of diabetes
- Liver cirrhosis marker
- Alcohol intoxication
- Sports Diagnostics
- Metabolism & Proper Nutrient Daily Monitoring



BASIC PHYSIOLOGICAL INDICATORS

- Body temperature
- Measurement of hand strength
- Attention test
- Measurement of blood oxygen saturation
- Drug intoxication by pupils
- Blood pressure
- Heart rate
- Arrhythmia monitoring



SPORTS DIAGNOSTIC

- The effectiveness of the training process
- Aerobic/anaerobic threshold
- Muscle acidity control
- Muscle fiber conduction analysis



BODY COMPOSITION ANALYSIS

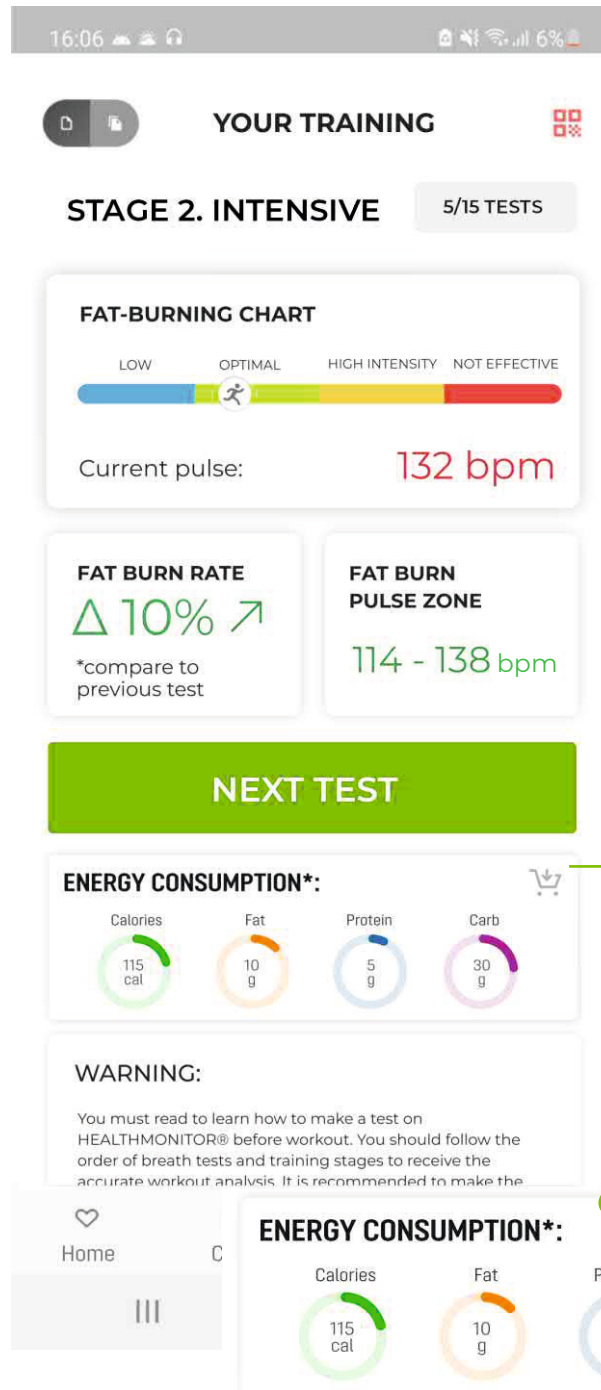
- Body composition analysis (water, protein, minerals, fat)
- Muscle/fat analysis (obesity, abdominal obesity)
- Segment analysis (lean and fat mass, extracellular water)
- Meal planner



STRESS AND FATIGUE ASSESSMENT

- Assessment of autonomic nervous system activity - Galvanic skin response
- Stress Level, Fatigue Level

RESULTS ARE STORED & DISPLAYED IN THE MOBILE APP



WORKOUT PLAN RECOMMENDATIONS

from beginners to professionals



Lipolysis

fat burning process

- Optimal heart rate zone
- Fat burning zone
- Aerobic Threshold



Glycolysis

process of energy gaining from glucose

- Anaerobic threshold
- Muscles gaining

NUTRITION RECOMMENDATIONS AND CONTROL

Strictly individualized recommendations for a nutrition plan, depending on your goals by measuring body composition indicators, exhalation analysis, and other physiological



Respiratory coefficient

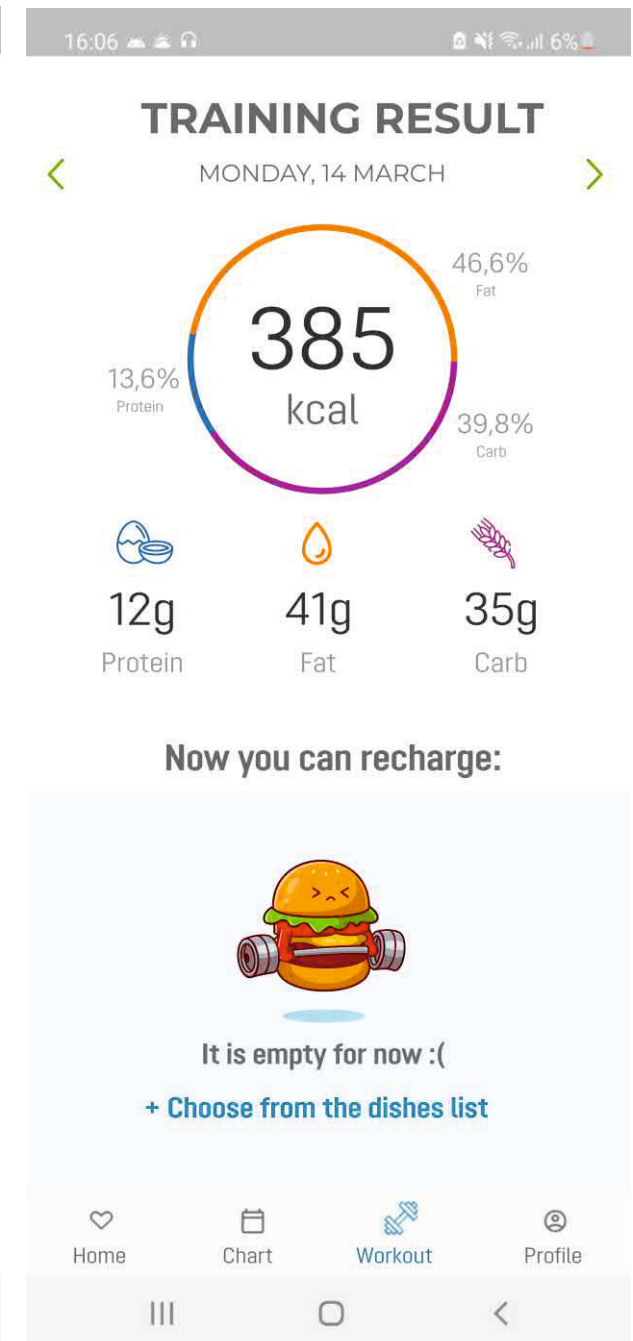
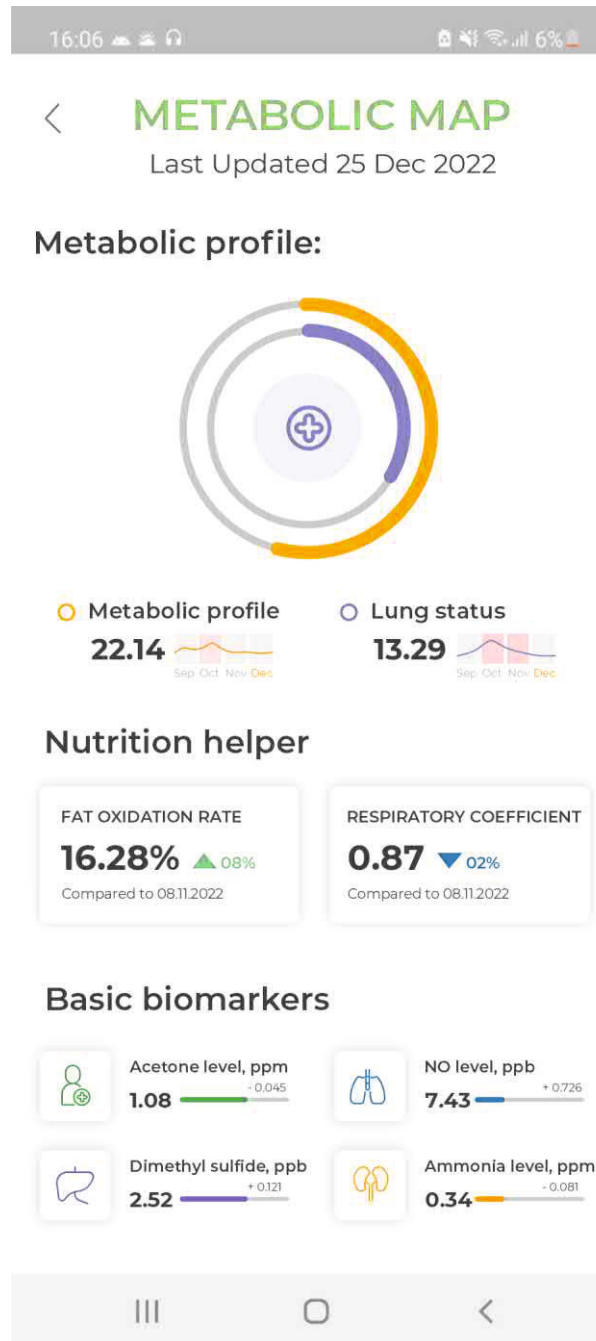
determining macronutrients used as the main source of energy

- Nutrition before and after training
- Fasting time after training



Dysbiosis control

Monitoring the number of normal microbial flora or the appearance of pathological microorganisms in the small intestine



SEND THE RESULTS TO THE DOCTOR

(preliminary diagnostic, non-medical service)

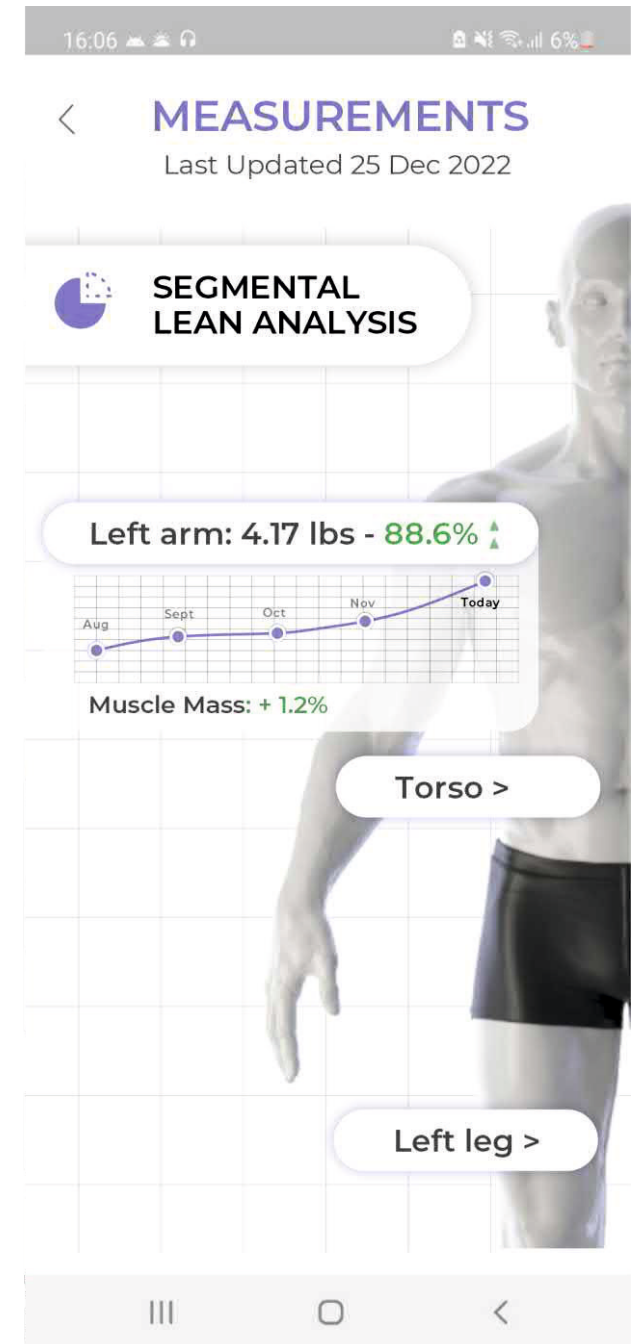
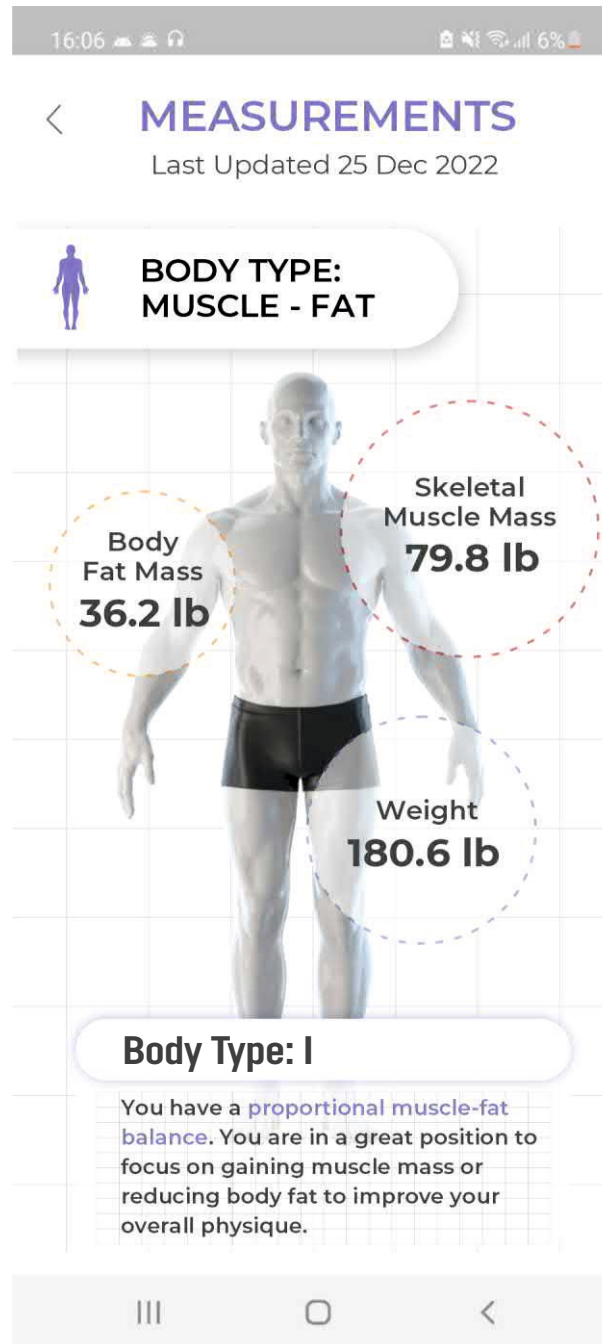
STEP 1: Choose **free service** with a doctor in your area, or send results to professionals from other regions (**payable service**)



STEP 2: Give **access** to your data by confirming with **two-factor authentication**



STEP 3: Upload **extended test results**, receive advice from specialists from all over the world **without leaving the application.**



NEW WAY TO ATTRACT CUSTOMERS

We create advertising - you get new customers

1

EQUIPMENT INSTALLATION

One-year exclusive agreement for new regions: only one device per area will make your business unique from competitors.

2

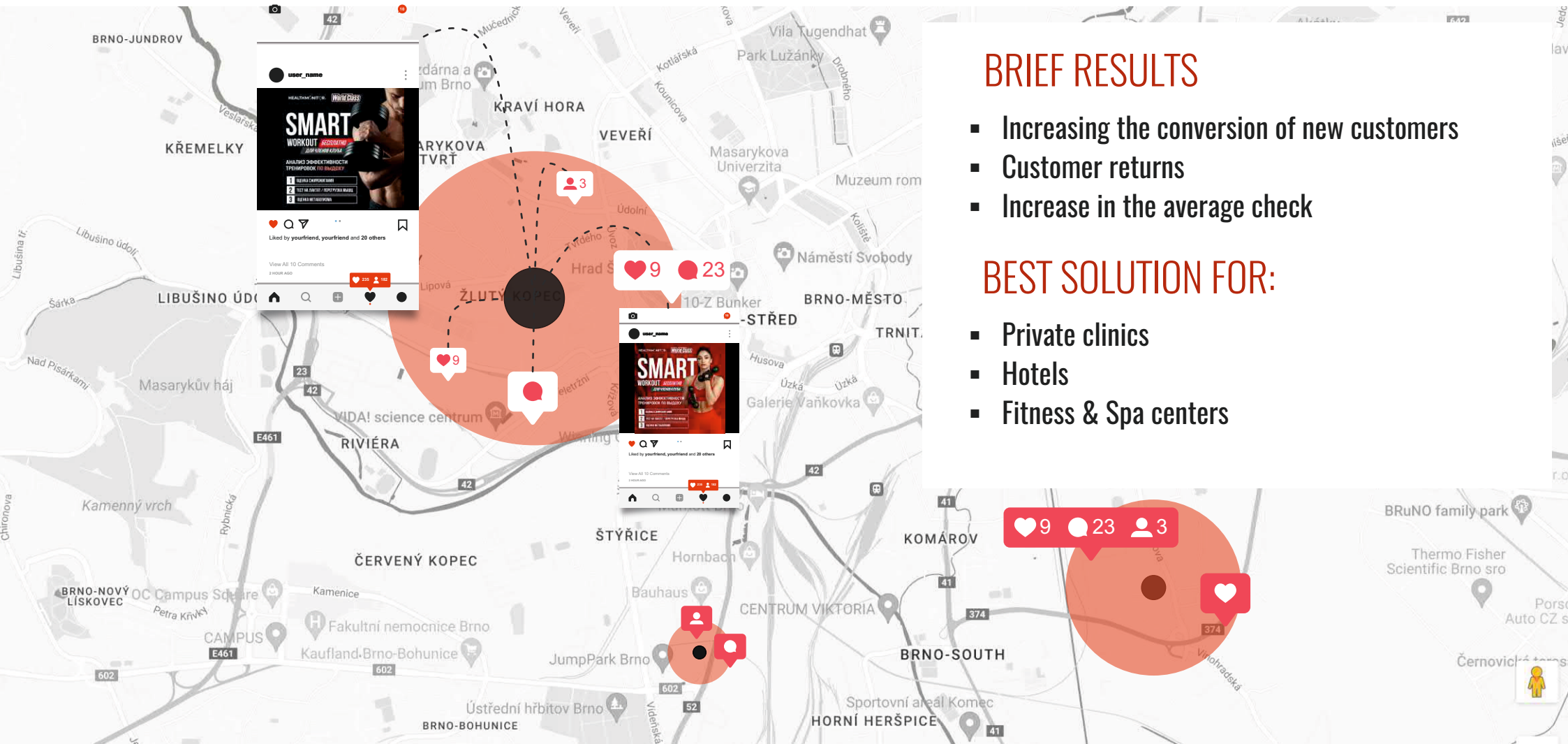
TARGETED ADVERTISING

Our team creates ads
for your audience

3

FREE FULL CHECK = NEW CLIENT

Unique full body check-up service



BRIEF RESULTS

- Increasing the conversion of new customers
- Customer returns
- Increase in the average check

BEST SOLUTION FOR:

- Private clinics
- Hotels
- Fitness & Spa centers

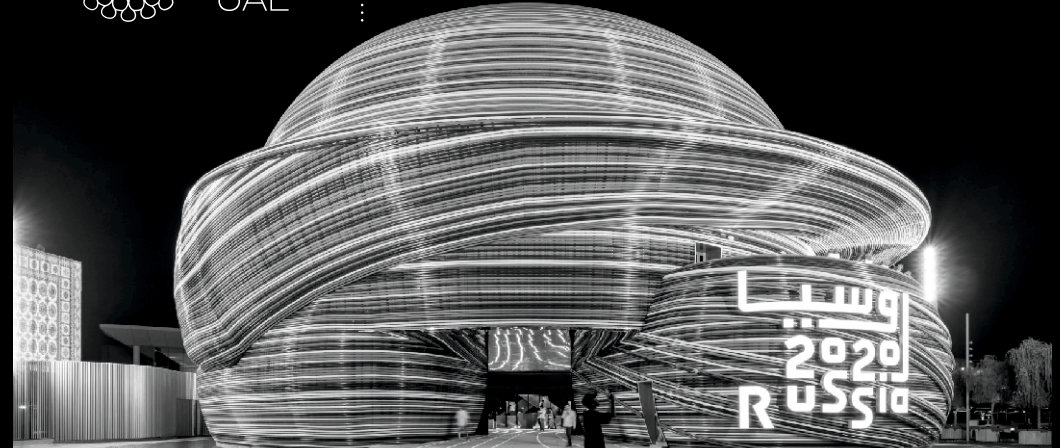
15
COUNTRIES

**TODAY HEALTHMONITOR GAS ANALYZERS
ARE PRESENT IN 15 COUNTRIES.
> 250 000 PEOPLE TESTED**



Our company was formed in the largest Russian scientific research city, Akademgorodok. It was a Soviet Union analog of the Silicon Valley created in 1960.

We have a wide expertise in various medical fields as well as biotechnology, nanotechnology, chemistry, physics, mathematics & data science.



HEALTHMONITOR at Dubai EXPO
30,000 PEOPLE TESTED IN 4 MONTHS



HEALTHMONITOR[®]

- www.healthmonitor.pro
- support@healthmonitor.pro
- +971-52-102-0256

Scientificcoin LLC

- **UAE**, Dubai, Silicon Oasis, SIT Tower, office 1912
- **Italy**, Montecchio Maggiore (VI), Via 2 Giugno 6
- **R&D office**, Russia, Novosibirsk, Nikolaev street, 11



DEVELOPED BY THE
RUSSIAN ACADEMY OF SCIENCE

